

Realist® Release 1.7 Notes

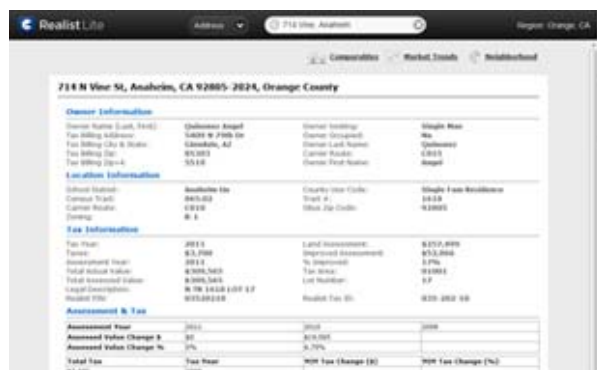
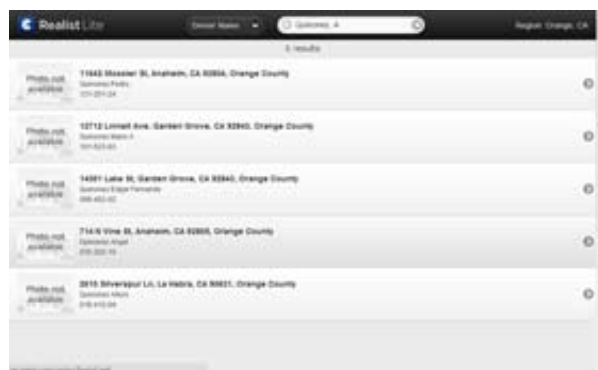
The following document provides an overview of what will be included in the 1.7 Realist release scheduled for July 28, 2012. This release contains a mix of new enhancements and refinements to existing features as requested by MLS organizations nationwide. The most notable changes are:

Introducing Realist Lite - iPad Friendly Solution

You asked for it and we delivered! Realist will detect when an agent is signed onto your MLS system using an iPad, and automatically present Realist Lite, our new iPad-friendly version.

Whether agents are viewing a listing and want to see the corresponding property on Realist, or wish to open Realist and conduct your own search, it is now ultimately convenient to do so on an iPad. Realist Lite supports search by address, owner name and APN. View results on a grid containing up to 50 results. From the grid, instantly view Property Detail reports, Comparables, Market Trends, or Neighborhood Profile reports.

Reports are delivered in a PDF format that agents can save on their iPad and email as they wish.



Utilizing Realist Lite is very intuitive and should look quite familiar to anyone accustomed to Realist. But we will also release a recorded Webinar soon to familiarize MLS members with this latest tool in the Realist suite.

Note that personalization for each user's reports still reside on the full Realist system. The county to be searched, the sections of the property detail report to be displayed, the



comparable search criteria, and default selections for the Neighborhood Profile Report can only be setup on the desktop version of Realist.

Support for other tablets can be added if there is sufficient demand, so please let your account specialist know about the demand for other tablets in your locale.

Of course, users accessing Realist via their laptop or desktop system will be unaffected. Read below for new features for users of the full Realist solution.

Statistics Added to Comparables Summary

Statistics have been added to the Comparable Summary to help agents select the best comparables before generating the final comparable report. As each prospective comp is selected or deselected, statistics are updated on-the-fly.

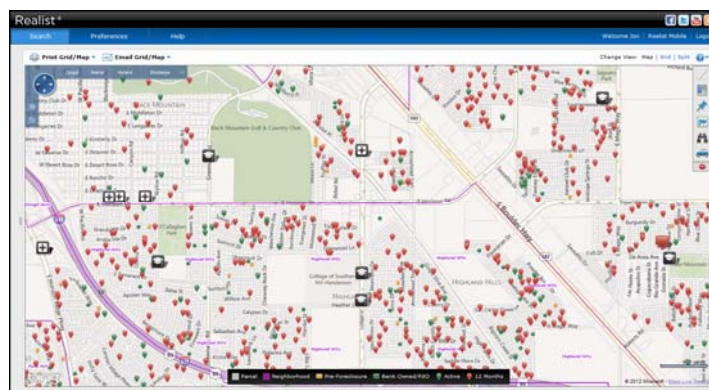
	HIGH	LOW	MEDIAN
Sale Price	\$360,000	\$205,000	\$297,500
Building Sq Ft	1,381	1,189	1,268
Price Per Sq Ft	N/A	N/A	N/A
Total Actual Value	\$395,680	\$46,714	\$192,382
Assessed Value Ratio	6.74	0.71	1.60

Agents who prefer seeing a large comp map can use Hide/Show Statistics button to switch their view.

Map Memory

Many agents repeatedly enable their favorite layers and features to appear Realist maps.

Now Realist maps have memory! Each time an agent modifies a map, Realist records their preferences and reapplies them the next time the agent accesses Realist and shows a map.



Map memory will save time and considerably increase productivity.



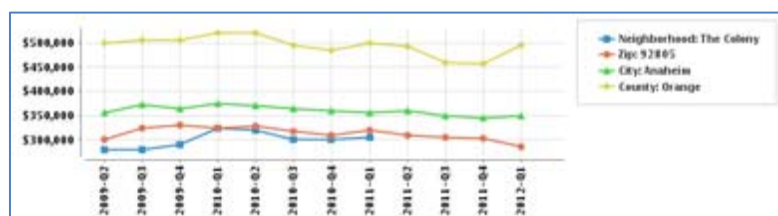
CoreLogic®

© 2012 CoreLogic, Inc.

REALIST® is a registered trademark of CoreLogic, Inc.

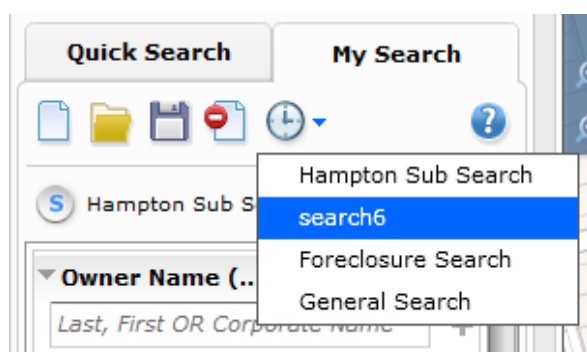
More Historical Trend Data

The new Realist release enables users to switch between monthly and quarterly trend views. When quarterly trends are selected, users can access up to 3 years of trend data and more easily compare how different geographies have been affected by the real estate market.



In addition, the Market Trends legend now detects and very clearly depicts what geographies are covered by each chart.

Simpler Search Controls



Delete saved searches more quickly and easily now. Delete functionality is now located in the Open Search dialog, and whenever an agent opens the file of their saved searches, they can open or delete a saved search with a single click.

The history of recently used searches has also been escalated and is now visible by clicking on the clock. Recently used searches retrieve the last 5 forms used by agent, but they do not bookmark the criteria used in those searches.

Additional Enhancements You'll Benefit From

- Realist now requires Flash 11; a small percentage of users will be prompted to upgrade to the latest version of Flash, but all users will benefit from faster Realist load times
- Realist now features a larger Show / Hide button for the search panel.



CoreLogic®

© 2012 CoreLogic, Inc.

REALIST® is a registered trademark of CoreLogic, Inc.